

Series 43000 Size 17 Linear Actuator

Salient Characteristics

Size 17: 43 mm (1.7") Hybrid Linear Actuator (1.8° Step Angle)					
Part No.	Captive	43H4(X)-V		43H6(X)-V	
	Non-captive	43F4(X)-V		43F6(X)-V	
	External Lin.	E43H4(X)-V		E43H6(X)-V	
Wiring		Bipolar			Unipolar**
Operating voltage	2.33 VDC	5 VDC	12 VDC	5 VDC	12 VDC
Current/phase	1.5 A	700 mA	290 mA	700 mA	290 mA
Resistance/phase	1.56 Ω	7.2 Ω	41.5 Ω	7.2 Ω	41.5 Ω
Inductance/phase	1.9 mH	8.7 mH	54.0 mH	4.4 mH	27.0 mH
Power consumption	7 W				
Rotor inertia	37 gcm ²				
Temperature rise	135°F Rise (75°C Rise)				
Weight	8.5 oz (241 g)				
Insulation resistance	20 MΩ				

Linear Travel / Step			
Screw Ø .218" (5.54 mm) inches mm		Screw Ø .250" (6.35 mm) inches mm	
.00006	.0015*	.000078*	.002
.00012	.0030*	.00015625	.0039*
.00024	.0060*	.0003125	.0079*
.00048	.0121*	.000625	.0158*
.00096	.0243*	.00125	.0317*
.00192	.0487*		

*Values truncated

Standard motors are Class B rated for maximum temperature of 130°C. Also available, motors with high temperature capability windings up to 155°C.

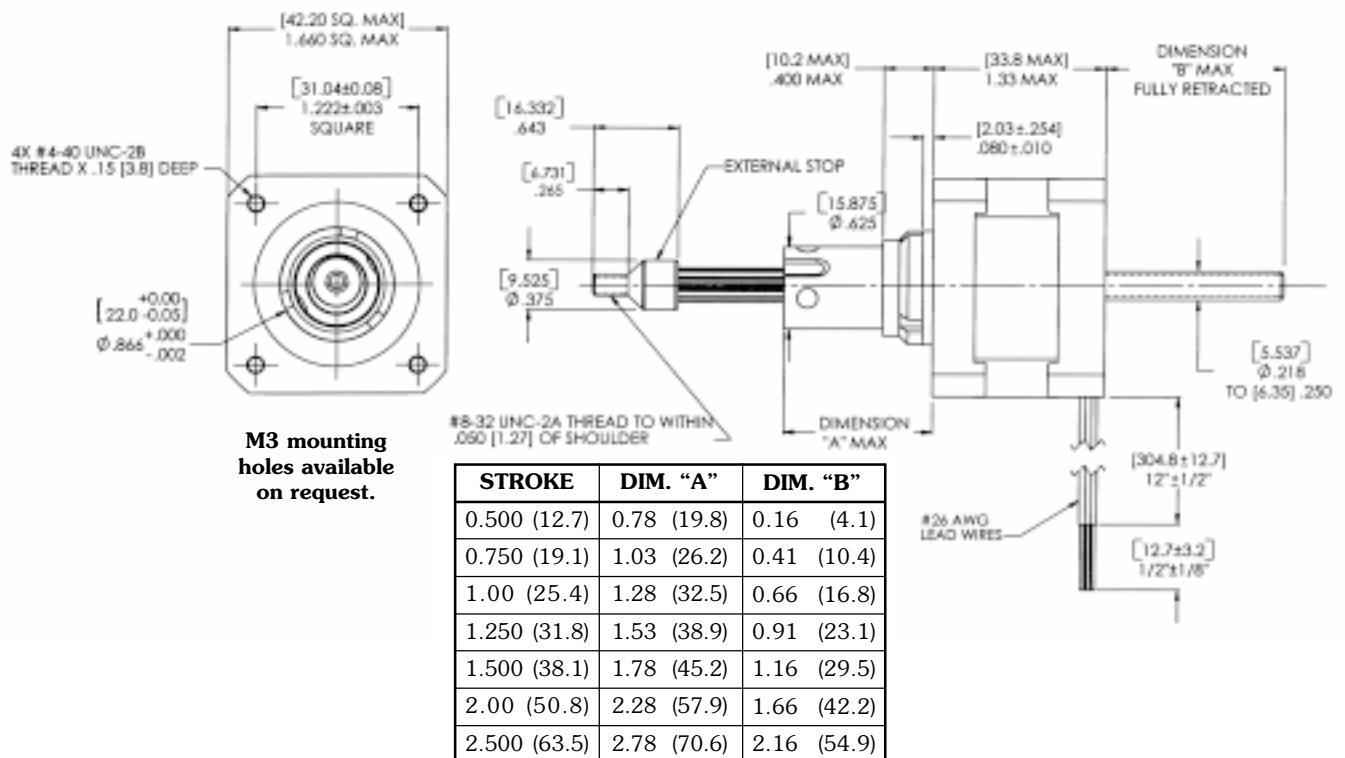
Special drive considerations may be necessary when leaving shaft fully extended or fully retracted.

NOTE: See page 21 to identify product code information before placing order.

** Unipolar drive gives approximately 30% less thrust than bipolar drive.

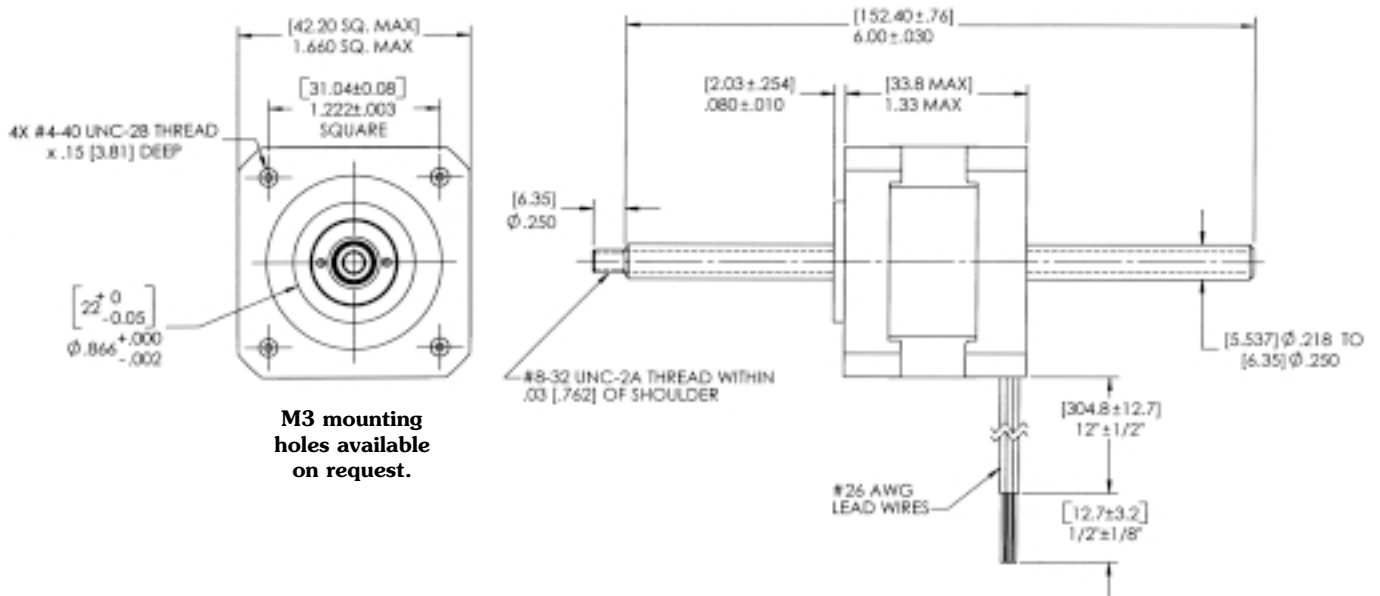
Series 43000 Size 17 Dimensional Drawings

Captive Shaft

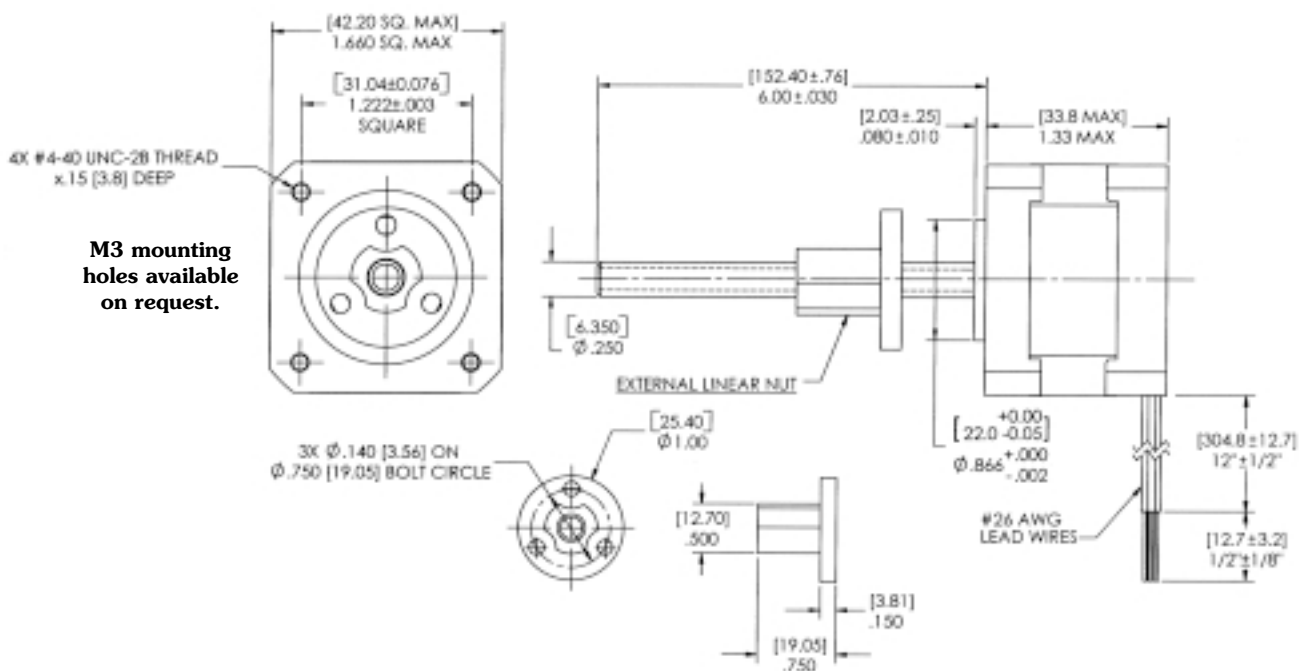


Series 43000 Size 17 Dimensional Drawings

Non-Captive Shaft

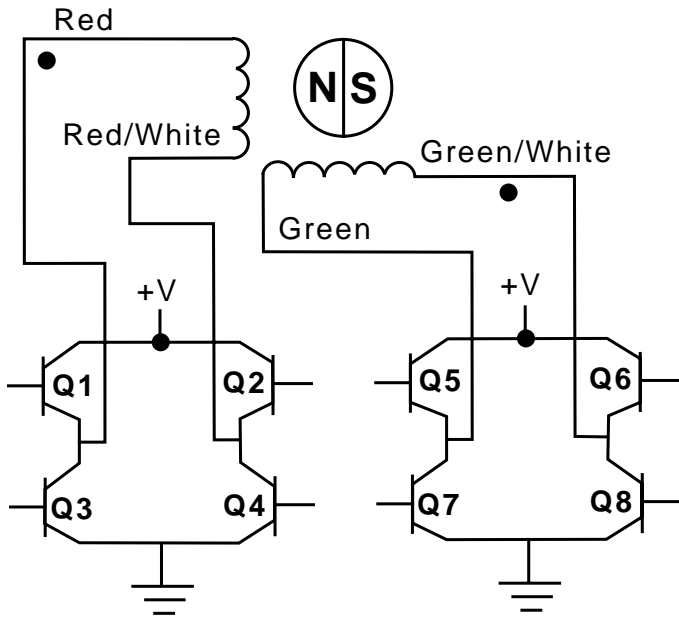


External Linear

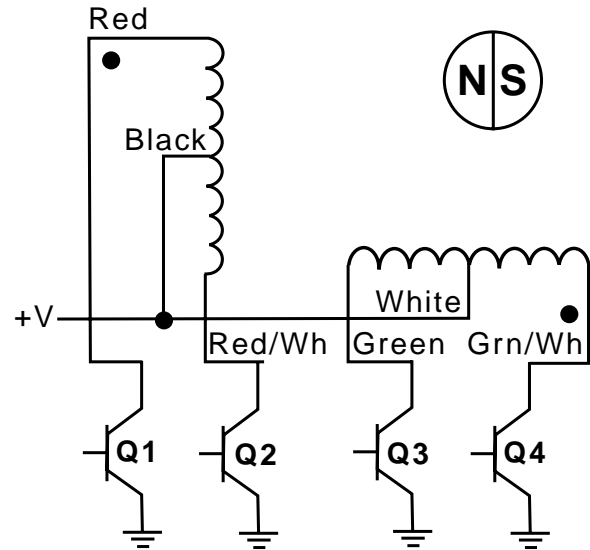


Hybrid Linear Actuator Wiring

Bipolar



Unipolar



Hybrid Linear Actuator Stepping Sequence

	Bipolar	Q2-Q3	Q1-Q4	Q6-Q7	Q5-Q8	
	Unipolar	Q1	Q2	Q3	Q4	
EXTEND CW →	Step					← RETRACT CCW
	1	ON	OFF	ON	OFF	
	2	OFF	ON	ON	OFF	
	3	OFF	ON	OFF	ON	
	4	ON	OFF	OFF	ON	
	1	ON	OFF	ON	OFF	

Note: Half stepping is accomplished by inserting an off state between transitioning phases.